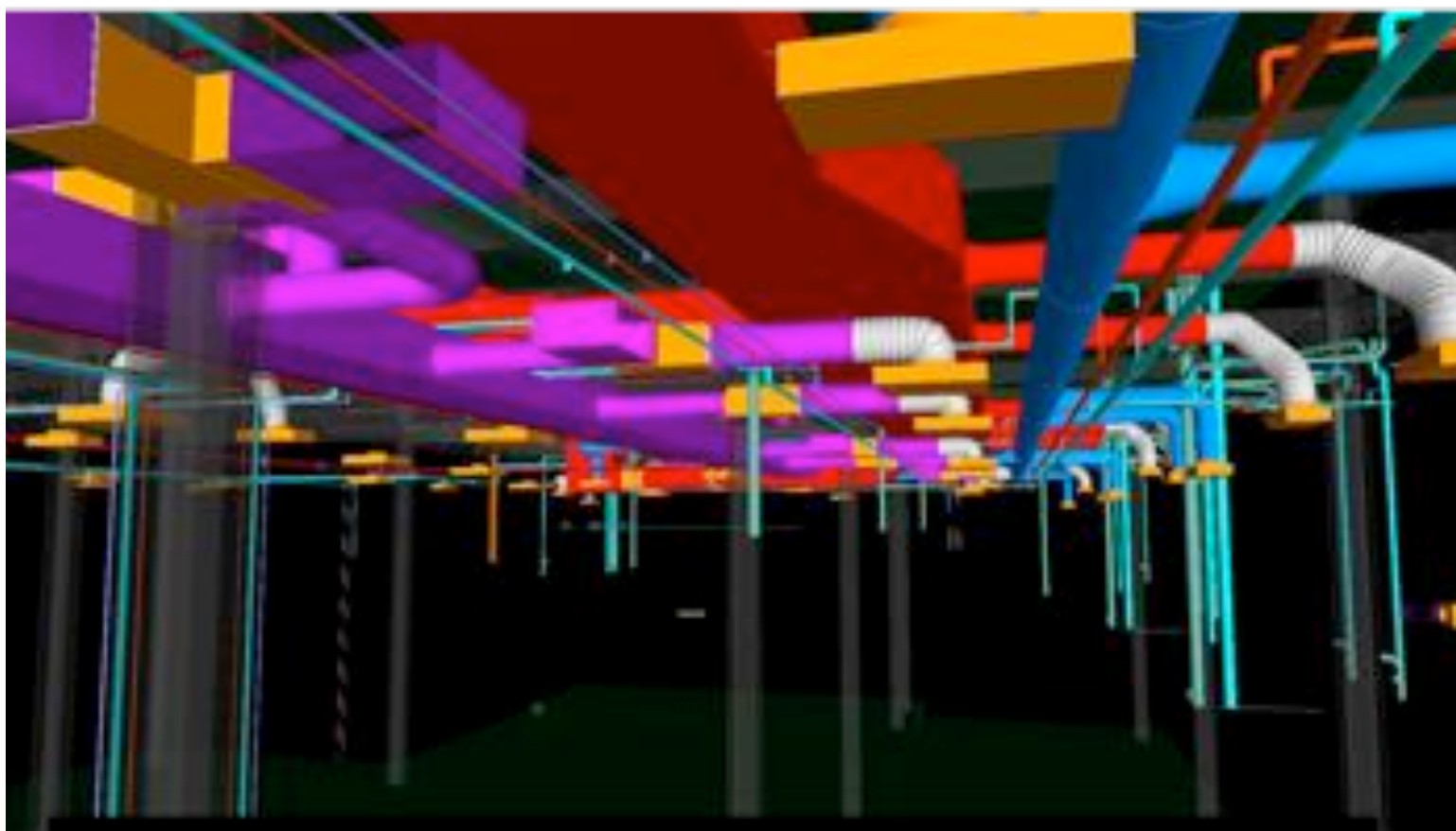


POLITECNICO DI MILANO



## **BIM e Interoperabilità in UK**

Process, market, innovation and IT in the British AEC Sector

*Dr Claudio Benghi, School of the Built and Natural Environment, Northumbria University*

**POLITECNICO di MILANO - Dipartimento BEST**

20 luglio 2011 - ore 15.00-18.30 Aula Muzio - via Ponzio 31

# **Process, market, innovation and IT in the British AEC Sector**

*Dr Claudio Benghi, School of the Built and Natural Environment, Northumbria University*

*version 0.1 - 15 June 2011*

## ***Programme Brief***

The construction sector, being closely connected to the subprime mortgage crisis that sparked the credit crunch at the end of 2008, is perhaps one of the most affected sectors in the current economic recession. This however was not unpredictable looking at the sector trends in the previous years; growth seemed to have come to a point of stall caused by the progressive decrease of investments both in public and private areas.

However every cloud has a silver lining and in these conditions, as profit margins decline, AEC firms may want or even be forced to invest in R&D to optimize the process and gain some competitive edge therefore pushing innovation. This assumption is at the base of a new commercial endeavour of Northumbria University to position itself as a preeminent and forward looking institution in the innovative sector of Building Information Modelling (BIM).

The lectures covers a number of areas that describe the details of the strategic plan starting with consideration with the social, financial, institutional, legal and commercial frameworks of the renewed push for efficiency and highlights some details of its threefold organisation on Educational structure, Research and development and Commercial exploitation.

## ***Lecture topics***

1. Innovation
  - a. Dynamics
  - b. AEC Road-maps
  - c. IT Road-maps
2. Characters of the British AEC Sector
  - a. Legal
  - b. Institutional
  - c. Commercial
  - d. Contractual / Insurance
  - e. Financial
3. Integrated project delivery
  - a. Maturity level of IT integration
  - b. Work-flow frameworks
  - c. Structure of networking technology
4. Drivers
  - a. Sustainability
  - b. Facility management
  - c. Design quality
  - d. Product marketing
  - e. Automation/Prefabrication
5. Technology
  - a. XBIM, interoperability framework
  - b. Cloud computing BIM systems
  - c. Mobile BIM services